

CZECH RADIO

in brief

2006/2007

[www.rozhlas.cz](http://www.rozhlas.cz)  
e-mail: [info@rozhlas.cz](mailto:info@rozhlas.cz)

with us you're never alone

  
ČESKÝ ROZHLAS



Czechoslovakia was the first country in continental Europe to begin regular radio broadcasts. Our first broadcast on **18. 5. 1923** was from a scout tent in the Prague district of Kbely.



status

stations

### public service radio

**Czech Radio 1 – Radiožurnál** (news, current affairs station)

**Czech Radio 2 – Praha** (station for the whole family)

**Czech Radio 3 – Vltava** (station devoted to culture)

**Czech Radio 4 - Radio Wave** (station devoted to youth)

**Czech Radio 6** (news, current affairs station)

### Czech Radio – regional broadcasting

Czech Radio Brno;	Czech Radio Plzeň;
Czech Radio České Budějovice;	Czech Radio Sever;
Czech Radio Hradec Králové;	Czech Radio Regina;
Czech Radio Olomouc;	Czech Radio Region, Středočeský Kraj;
Czech Radio Ostrava;	Czech Radio Region, Vysočina
Czech Radio Pardubice;	

**Czech Radio 7 – Radio Praha** (international broadcasting)

**Czech Radio Online** (Czech Radio's website)

**Czech Radio D-dur** (classical music)

**Czech Radio Rádio Česko** (news, current affairs station)

**Czech Radio Leonardo** (popular-educational station)

Czech Radio also supports original artistic radio work (in the form of the Prix Bohemia Radio), important artistic bodies (the Prague Radio Symphony Orchestra, the Czech Radio Big Band, the Dismal Children's Radio Ensemble, Children's Choir) and young musicians from many areas (the Concertino Praga and Concerto Bohemia competitions). It is an active member of the European Broadcasting Union (EBU) and – via the Czech Radio Endowment Fund – is also involved in the area of charity.

FM, MW, LW, SW, DVB-T + live broadcasting on [www.rozhlas.cz](http://www.rozhlas.cz)

Vinohradská 12, 120 99 Praha 2, Czech Republic

[info@rozhlas.cz](mailto:info@rozhlas.cz)

non-programming activities

broadcasting bands

address

e-mail

nationwide news-current affairs station  
broadcasting 24 hours a day



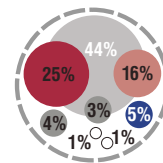
[www.rozhlas.cz](http://www.rozhlas.cz)  
[/radiozurnal](http://radiozurnal)

[www.izurnal.cz](http://www.izurnal.cz)

e-mail:  
[radiozurnal@rozhlas.cz](mailto:radiozurnal@rozhlas.cz)

- news
- current affairs
- sport
- arts programmes
- traffic and motoring
- broadcasting for minorities
- religious broadcasting
- music

- fast, reliable and thorough information service reporting on both domestic and international events
- commentators offering the widest possible range of views
- up-to-date traffic and weather reports
- interviews, discussions and meetings with interesting people
- religious broadcasting
- broadcasting for minorities
- Czech and foreign popular music



### What you won't find elsewhere

- live domestic and foreign **sports broadcasts**
- the **Your Topic** series - every day a different issue is aired on a phone-in programme in which the public participate
- **ižurnál**, Czech Radio 1 - Radiožurnál's internet server. Offers constantly updated information from home, abroad and the worlds of economics and sport, as well as detailed weather forecasts, traffic news and transcriptions of selected current affairs programmes



### Frequencies on FM (MHz)

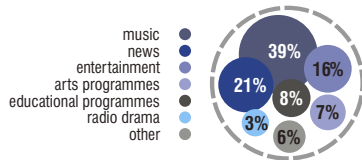
Brno-Kojál 95,1 \* České Budějovice 91,1 \* Domažlice 98,0 \* Hodonín 106,2 \* Chomutov 98,9 \* Jeseník 91,3  
Jihlava 90,7 \* Karlovy Vary 102,6 \* Klatovy 99,8 \* Liberec 95,9 \* Mariánské Lázně 97,6 \* Ostrava 101,4  
Pardubice 89,7 \* Písek 97,0 \* Plzeň-Krašov 89,1 \* Plzeň-Radeč 99,2 \* Praha 94,6 \* Příbram 102,2 \* Sušice 90,6  
Trutnov 88,5 \* Třebíč 92,1 \* Uherský Brod 93,0 \* Ústí nad Labem 90,9 \* Valašské Meziříčí 92,5 \* Votice 93,1  
Vsetín 92,1 \* Zlín 99,5 \* Znojmo 101,2

**LW Transmitters (kHz)** Mon – Sat / 05:00 – 24:00 / Sun + holidays / 06:00 – 24:00 / Uherské Hradiště - Topolná 270



nationwide station for the whole family  
broadcasting 24 hours a day

- a colourful mix of information, educational programmes and entertainment
- programmes for children
- news and current affairs programmes
- broadcasting about free time, interests, pastimes and hobbies
- a wide selection of music - contemporary popular music, oldies, folk, brass band music



**What you won't find elsewhere**

- this much entertainment
- so many programmes for children
- a fairytale every day
- live broadcasts of religious services

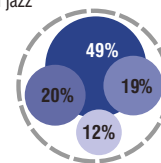
**Frequencies on FM (MHz)**

Brno-město 92,6 \* České Budějovice 103,7 \* Hodonín 107,8 \* Chomutov 94,2 \* Jeseník 88,7 \* Jičín 106,9 \* Jihlava 107,1  
Klatovy 90,3 \* Kutná Hora 102,2 \* Liberec 89,9 \* Nové Hradky 102,2 \* Olomouc 107,2 \* Pardubice 100,1 \* Písek 98,9  
Plzeň-Krašov 101,7 \* Praha 91,2 \* Třinec 101,9 \* Ústí nad Labem 98,6 \* Valašské Meziříčí 89,9 \* Vočice 103,2  
Vrbovná p./Pradědem 103,6 \* Vsetín 102,9 \* Zlín 107,7  
**Transmitters MW (kHz)** Mon-Fri /04:00 – 18:00/ Sat, Sun + holidays /05:00 – 18:00/ České Budějovice 954  
Dobruška 954 \* Karlovy Vary 954 \* Moravské Budějovice 1332 \* Ostrava 639 \* Praha-Liblice 639



nationwide station aimed at people with  
an interest in music, the spoken word  
and culture in the widest sense of the word  
- broadcasting 24 hours a day

- almost 70% of broadcasting consists of classical music and jazz
- literature, drama and documentaries at prime times
- complete daily arts listings
- simple and clear programme schedule  
(the same genres are featured at the same time every day)



- classical music
- arts information
- arts news
- spoken word (drama, prose, poetry)
- jazz and other genres of music

**What you won't find elsewhere**

- live broadcasts from opera houses and concert halls around the world
- radio documentaries and radio drama
- jazz, ethnic and other specific genres of music
- **Klub Vltava** offers closer contact with broadcasts and publishes an exclusive quarterly, the Magazin Klubu Vltava, with information from the world of culture.



**Frequencies on FM (Mhz)**

Benešov 99,0 \* Brno-Kojál 102,0 \* Brno - Město 90,4 \* České Budějovice 96,1 \* Hodonín 100,4 \* Cheb 106,2 \* Chomutov 96,3  
Jeseník 98,2 \* Jihlava 95,4 \* Kaplice 105,9 \* Karlovy Vary 105,7 \* Kašperské hory 107,2 \* Klatovy 88,6 \* Liberec 103,9  
Ostrava 104,8 \* Pardubice 102,7 \* Písek 105,2 \* Plzeň-Krašov 95,6 \* Plzeň-Radeč 93,3 \* Praha 105,0 \* Příbram 107,0  
Trutnov 101,9 \* Ústí nad Labem 104,5 \* Valašské Meziříčí 96,8 \* Varnsdorf 88,4 \* Vsetín 98,3 \* Zlín 94,8 \* Znojmo 99,2

www.wave.cz

email:  
radiowave@rozhlas.cz

**A station for young people from the Central Bohemia region. Broadcasting 24 hours a day.**

- great music which you won't hear elsewhere
- hip-hop and r'n'b, guitar bands, punk and electronica
- a daily stream where everyone will find their favourite type of music
- evening genre shows for real enthusiasts
- presenting teams who speak your language
- reporters visit new clubs, interesting exhibitions and good films, and introduce you to new bands



#### What you won't find elsewhere:

- presenters such as Richard Krajčo, Joshua (100°C), Karel Buriánek (Sunshine), Rae (Clou), Abdul 52, Omar (D-Real-C) and Kuba Alexa (Quite Quiet)
- free-flowing, intelligent and funny talk-shows
- the latest information on everything you're into
- live concerts by stars such as Coldplay, Green Day, Chemical Brothers, The Roots, Dana Bárta and Skyline
- live broadcasts from festivals, concerts and sports events

#### **Frequencies on FM (MHz)**

100,7 FM (Prague, Central Bohemia Region)

Programme you can tune up also on **DVB-T** in Multiplex A (České radiokomunikace)

**Nationwide news-current affairs station  
broadcasting from 18.00 to 24.00 on AM**



www.rozhlas.cz/cro6

e-mail:  
cro6@rozhlas.cz

- live broadcasting on the internet and transcriptions of selected programmes and reports
- offers objective news, analysis and discussion of domestic and regional issues
- programmes with a religious theme
- Request radio – a unique internet service for listening to broadcast programmes



#### We promise you

- extensive news from home and abroad
- current affairs analysis and comments
- information from all areas of science and culture
- environment, education and healthcare
- civic society

#### **Frequencies on AM (kHz)**

České Budějovice 954 \* Dobruška 954 \* Karlovy Vary 954 \* Moravské Budějovice 1332 \* Ostrava 639  
Praha-Liblice 639

Programme you can tune up also on **DVB-T** system in Czech Radio Rádio Česko programme

**Multiplex A** (Czech Radiocommunication)

Prague & environs: 25<sup>th</sup> canal, Brno & environs: 40<sup>th</sup> canal, Ostrava & environs: 39<sup>th</sup> canal

www.radio.cz

e-mail:  
cr@radio.cz

**Radio Prague the International Service of Czech Radio: the latest news from the Czech Republic in six languages**

- broadcasts in English, German, French, Spanish, Russian and Czech
- aimed at listeners outside the Czech Republic
- available on shortwave, on the Internet – [www.radio.cz](http://www.radio.cz) (MP3, RealAudio) and in Europe and North America via satellite
- English broadcast available in Prague on 92.6 FM, Monday – Thursday, from 7.07 to 7.22 pm

## Czech Radio – Regional broadcasting

We broadcast from our studios in the eleven regional cities: Brno, České Budějovice, Hradec Králové, Jihlava, Karlovy Vary, Liberec, Olomouc, Ostrava, Pardubice, Plzeň, Praha, Ústí nad Labem, Zlín

www.rozhlas.cz

e-mail:  
see contacts

- over the 2000 – 2002 period, independent programming for the Central Bohemia, Vysočina and Pardubice regions were introduced; “local windows” were gradually expanded to the Karlovy Vary and Zlín regions, from 2005 also to the Liberec region
- Czech Radio’s long-term goal is to have a regional broadcasting structure in place in which each region would have its own radio station



### We promise you

- regional news, current affairs and music
- arts, documentary programmes and smart entertainment
- regional made high-quality creative radio programmes

#### Frequencies on SW

13 m \* 16 m \* 19 m \* 25 m \* 41 m \* 49 m

CR 7 - Radio Praha can be received via the Czechlink satellite system and also in German and English on Eutelsat Hotbird 5

For detailed information on broadcasting times and frequencies see [www.radio.cz](http://www.radio.cz).

#### Frecuencie on FM (MHz)

Brno - 106,5 - 89,5 - 93,1 - 93,6 - 97,5 - 97,3 - 99,1 - 107,3 \* České Budějovice - 88,2 - 106,4

Hradec Králové - 90,5 - 95,3 - 96,5 \* Olomouc - 106,8 - 92,8 - 88,7 \* Ostrava - 107,3 - 99,0 - 105,3 - 102,6 - 95,5

Pardubice - 104,7 - 101,0 - 102,4 \* Plzeň - 106,7 - 91,0 - 95,8 - 102,4 - 105,3 - 103,4 - 100,8 - 96,7 - 106,3

Sever - 88,8 - 91,3 - 98,5 - 102,3 - 103,1 \* Regina - 92,6 \* Region, Středočeský kraj - 100,5 - 100,3

100,0 - 100,4 \* Region, Vysočina - 87,9

www.rozhlas.cz

e-mail:  
online@rozhlas.cz



There are no borders for us on the world-wide web. Even in the furthest flung parts of the world everyone can enjoy Czech Radio Online

- news and information from the Czech Republic and around the world
- the latest information from the world of science and technology
- news about the world of nature
- arts news
- information about interesting radio programmes
- sound recordings from the radio archives

Czech Radio Rádio Česko  
the news and current affairs radio station  
from Czech Radio broadcasts every working day  
from 7 to 11 am and from 1 to 6 pm



www.radio-cesko.cz

e-mail:  
cesko@rozhlas.cz

- fast, reliable and comprehensive information on events both at home and abroad
- interviews with politicians, economists and other experts
- up-to-date current affairs, commentary and notes
- direct broadcasts from important events



**Selected Pages**

- Children's pages – games and learning for children of all ages
- Nature – where else can you find an audio atlas of animals?
- World – reports and photos from around the world
- Odyssey – online monitoring of the migration of black storks

**What you won't find elsewhere**

- audio archive and recordings of selected programmes
- content suited to different times and moods
- relax with Czech Radio's internet pages



**What you will not find elsewhere**

- comprehensive news reports every 15 minutes
- detailed financial and sports information every hour
- a stream of important information with no music
- analytical interviews give you the background on important events at home and abroad



www.rozhlas.cz



Czech Radio - Rádio Česko you can tune up:

- on BBC frequencies(VK/FM - MHz): Zlín 93,9 \* Olomouc 105,6 \* Brno 101,3 \* Liberec 99,2
- Ostrava 106,3 \* Plzeň 98,6 \* Ústí nad Labem 105,8 \* České Budějovice 89,8
- Pardubice/Hradec Králové 99,1 \* Praha 101,1 \* Jihlava 96,7 \* Karlovy Vary 94,7
- digital way in Prague, Brno and Ostrava
- on www.radio-cesko.cz webpage

www.rozhlas.cz/d-dur

e-mail:  
d-dur@rozhlas.cz

**Czech Radio D Dur**  
broadcasts classical music from Renaissance to 21st century works 24 hours a day – a station not only for those "seriously interested in serious music", as well as for those who just need classical music as a pleasant accompaniment to their work or leisure



- the finest works of music are repeated at different times of the day each time they are broadcast
- the very best recordings from the vast Czech Radio archives are included in the schedule
- there is a direct broadcast or recording of a concert every working day from 8 pm and opera every Sunday from 4 pm
- the schedule is prepared by experienced Czech Radio 3 – Vltava programme planners
- the station is to be broadcast at the highest possible technical standard on the internet and using DVB-T system

**Živě vysílání**  
06:00 - 07:00  
07:00 - 08:00  
08:00 - 09:00  
09:00 - 10:00  
10:00 - 11:00  
11:00 - 12:00  
12:00 - 13:00  
13:00 - 14:00  
14:00 - 15:00  
15:00 - 16:00  
16:00 - 17:00  
17:00 - 18:00  
18:00 - 19:00  
19:00 - 20:00  
20:00 - 21:00  
21:00 - 22:00  
22:00 - 23:00  
23:00 - 24:00

**Kontakt**  
Český rozhlas D-dur  
vondrovská 12  
100 99, Praha 2  
d-dur@rozhlas.cz

**ČRa3 - Vltava**  
• 07:00 - 08:00  
• 08:00 - 09:00  
• 09:00 - 10:00  
• 10:00 - 11:00  
• 11:00 - 12:00  
• 12:00 - 13:00  
• 13:00 - 14:00  
• 14:00 - 15:00  
• 15:00 - 16:00  
• 16:00 - 17:00  
• 17:00 - 18:00  
• 18:00 - 19:00  
• 19:00 - 20:00  
• 20:00 - 21:00  
• 21:00 - 22:00  
• 22:00 - 23:00  
• 23:00 - 24:00

**ENGLISH VERSION**

**ČRa3 - Vltava: Váňná hudba**  
• SVOBODNÉ UMĚNÍ HENRICA ALKALISTRA 9.1.21.20  
• MEZI SNĚM A SKUTEČNOSTI 11.20 0106.10.14.04

**Dnešní program**  
00:10 Leslie Carpenter: Suita pro cembalo F dur  
00:37 Jan Sibelius: Koncert pro housle a orchestr d moll op. 47  
01:10 Franzlisch Xaver: Hráni: Hra: odměna D dur. Hráni pro sála, obor, orchestr a varhany.  
04:01 Czech Violin: Symfonie L. B Fa dur  
05:33 Ludwig van Beethoven: Suita pro klavír 4. 17. 1. 1801 op. 33 č. 2 One-Theme - Beethoven

**Rádio na pláň**  
Zastavte se a slyšte rádio a možná se vám něco podaří. (ČRa3 - Vltava) 2.20

### What you will not find elsewhere

- web services – discussions on classical music Recordings, encyclopedic information on composers

Where will you hear us?  
[www.rozhlas.cz/d-dur](http://www.rozhlas.cz/d-dur)

**Czech Radio Leonardo**  
The adventure of learning  
Round the clock science, nature, technology,  
history and the world at large



- a station for the curious
- specialized magazines on science, technology, nature, history and the world at large hour-long interviews and discussions
- popularization programmes from all Czech Radio: Meteor, Planetarium, Rambles through the Czech Past, Foreign Reporters' Notebook and many other programmes

### What you will not find elsewhere

- All morning and afternoon with Leonardo – every working day from 9 am to 11 am and from 2 pm to 4 pm, a stream of news and items of interest from the world of science and technology, a stream in which we do not cut any songs
- Enter! – every working day from 11 am to 12 noon, discussion with people involved in science and research
- specialized magazines: interviews, reports, readings, every working day from 6 pm to 7 pm
- ethnic and contemporary music – music programmes at midnight and noon, 7 am and 7 pm

www.rozhlas.cz/  
leonardoe-mail:  
leonardo@rozhlas.cz

Where will you heard us? [www.rozhlas.cz/leonardo](http://www.rozhlas.cz/leonardo)  
+ DVB-T system of Multiplex A (Czech Radiocommunications)



# Audio World



## Live broadcasts

Czech Radio nationwide and regional station broadcasting on the internet.

## Request radio

A unique internet service for listening to broadcast programmes

- allows you to download and listen to specific programmes or to compile your own "station" from selected programmes – your very own request radio

## News reports

Recordings of Czech Radio – Radiožurnál news reports from over the last 24 hours in MP3 format

## Internet specials

Special-subject internet radio

- Folk radio, Radium, Radiocustica and more...

## Podcast

- New technology on the Czech Radio website. Our latest programmes are always available.

## Czech Radio's communication with the public

Czech Radio does not only use the airwaves to communicate with the public. We also **co-operate with other media** (such as Czech Television and various daily newspapers), use **public relations** and support different charity projects in the form of media partnership, as well as other publicity activities.

The emphasis is placed on **publicising Czech Radio** as an institution which provides the broadest possible service in the field of radio broadcasting. In recent years great stress has been put on the brand Czech Radio and strengthening and making more precise the position of individual stations on the market. The **unified visual style** of Czech Radio and its stations is important in this regard.

Czech Radio supports many exceptional **charity, educational, cultural and sports institutions** and their activities (in the form of media co-operation). Among our long-term partners are the National Museum, the State Opera, the Administration of Prague Castle, the Czech Olympic Committee and important festivals such as the Prague Spring, the Prague Autumn and others.

Another important part of Czech Radio's activities involves **organising our own events**, such as the regular **Open Day**, Give Blood with Czech Radio, the Prix Bohemia Radio festival, charity toy collections, etc. Every year a **Czech Radio Yearbook** is published in a Czech-English version; it contains a summary of our programmes and economic results for the previous year. Current information on Czech Radio's stations and their programmes is available on various types of brochures and other printed material.



**ČESKÝ ROZHLAS**

**Živé vysílání**  
Internetové vysílání celoplošných stanic a studií Českého rozhlasu.  
www.rozhlas.cz/zive

**Rádio na přání**  
Poslouchejte své oblíbené pořady, když zrovna máte čas.  
stanička: [input] [OK]  
čas: [input] [OK]  
Rádio na přání - informace  
nové: PODCAST

**iradio**  
Váš internetový přehrávač  
Pro návštěvníky našich stránek jsme připravili přehrávač, který si poradí se všemi audio formáty, nabízejícími na portálu www.rozhlas.cz  
www.rozhlas.cz/iradio

**Archiv**  
Vzpomínka na Zuzanu Navarovou  
Rozhlasová vzpomínka na Irana Htiniku (OggVorbis/32kbps)  
Prix Bohemia 2004: audio příspěvky ze semináře, čtvrtek 7. 9. 2004  
9 MUŽŮ NA HRADĚ

**Ogg Vorbis**  
Audio kompresní formát, který nabízí profesionální technologii encodingu a streamování  
www.rozhlas.cz/ogg

**Jak na to...**  
Máte potíže s posledním internetového vysílání? Nemůžete přehrát audio soubory? Využijte sekci "Jak na to", která vám pomůže vyřešit potíže a otázky spojené s problematikou audia na internetu.  
www.rozhlas.cz/audio/help

**Zpravodajství publicistika**  
Záznamy zpravodajských relací  
Radiofórum  
Názory a argumenty

**Internetové speciály**  
FOLKLÓRNÉ RADIO  
připravujeme ve spolupráci s Folklorním sdružením České republiky  
www.rozhlas.cz/folklor

www.rozhlas.cz/audio

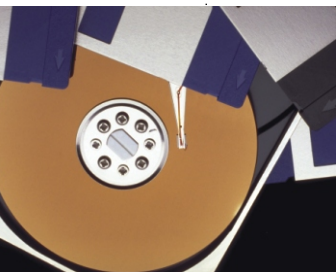
For Czech Radio **direct contact with listeners** is important. Written and telephone feedback and requests for programmes to be repeated reach us via email address [ohlasy@rozhlas.cz](mailto:ohlasy@rozhlas.cz) and the special listeners' number +420 22 155 1313.

### Archive and Program Fund (APF)

APF Department provides for general care of funds and collections of audio, written, and video materials. The current length of the funds and collections exceeds **12,000 meters**. The length of sound funds exceeds **9,000,000 minutes**, written funds count over **50,000,000 pages**, and the number of books is greater than 50,000.

The funds and collections consist of audio recordings on various types of both historic and current media, music, photographs, personal inheritances, administrative materials, technical documentation, clippings, books, and prints. These are significant from the perspective of historic and cultural usage for program purposes, promotion, and possibly also for commercial purposes. They constitute a valuable source for both radio and general history.

They comprise many unique documents, the most valuable of which are the voices of our presidents, Emperor Franz Joseph, and significant cultural personalities: the Čapek brothers, J. Hora, K. Biebl, scientists F. Křížik, B. Hrozný, J. Pekař, J. Heyrovský, and others. They also capture significant historical moments, such as Munich 1938, May 1945, the political trials of 1950s, August 1968, etc. The fund's written documents consist of real jewels, such as the manuscripts of K. Čapek, B. Martinů, L. Janáček, and J. Suk.



Archive materials can be accessed by the public under set conditions – for more see the **Business Activities / Sale of Licenses** section.

### Radioservis, a.s.

Radioservis is a daughter company of Czech Radio and acts as its publishing service. It brings out the weekly **Tydeník Rozhlas** magazine, which is the only publication to carry listings of all the programmes broadcast by every Czech Radio station. Radioservis also releases **sound recordings** on various formats. An important part of its activities is the **publication of books**, mainly books that concern radio or are written by radio personalities.

RADIOSERVIS

TYDENÍK ROZHLAS



Radioservis's products can be bought at the **Czech Radio and Czech TV shop** at Vinohradská 12, Prague 2, tel. +420 22 155 1349, Mon – Fri (9.00 – 18.00);

Mail Store: [www.radioservis-as.cz](http://www.radioservis-as.cz).

Informations: +420 222 715 036, e-mail: [eshop@rozhlas.cz](mailto:eshop@rozhlas.cz).



Nadační fond  
Českého rozhlasu

## The Czech Radio Endowment Fund

### **Světluška**

(„Lightning fly“: a symbol that brings „light into darkness“)

The best recognized long-term project of the Czech Radio Foundation is a nation-wide money collection entitled Světluška. Money raised in this annual fundraising event, accompanied by blindness awareness campaign, are carefully distributed to the blind and partially sighted people in a public granting procedure supervised by a Counsel of Experts. Patron of the project is well-known singer Aneta Langerová.

Světluška supports: early intervention care for families with children with multiply disabilities (vision and movement stimulation), personal assistance for blind children integrated to normal schools, purchase of auxiliary aids such as digital reading device with voice output, Braille display, guide dogs, mobility and orientation training (using white cane), vocational skills, sheltered living and supported workplace, daily living skills, recording books on tapes etc. The bank account (ten nines) **99999 99999/0600** is open to donors throughout the whole year.

The Czech Radio Foundation was established at the instigation of the director of Czech Radio, Václav Kasík. In the five years of existence the foundation granted over 30 million Czech crowns, especially to blind children and partially sighted people who are in desperate or extremely demanding situation.



#### **Contact:**

Czech Radio Foundation, Vinohradská 12, 120 99 Praha 2,  
tel: +420 221 551 217-9, e-mail: [nadacni.fond@cro.cz](mailto:nadacni.fond@cro.cz),  
[www.svetluska.net](http://www.svetluska.net)

**“Every one sometimes needs light in the darkness.”**

Collection account no.: **99999 99999/0600**  
**DMS SVETLUSKA** – send to no. 87777 (contribution 30 CZK)

## Prague Radio Symphony Orchestra (PRSO)

The Prague Radio Symphony Orchestra was **established in 1926** and its history dates back to the virtually beginning of Czech Radio's broadcasts. During its existence the orchestra has built up a very high reputation, thanks to its rich programme and ever-improving artistic standards. It has become an essential part of the Czech concert scene and a welcome guest at concert halls abroad.

The PRSO has been led by **many important conductors** over the years, including C. Munch, F. Konwitschny, H. Scherchen, G. Rozhdyestvensky, S. Baudo, L. Segerstam, C. Mackerras and V. Neumann. Among composers whose work the orchestra has premiered are A. Honegger, A. Khachaturjan and K. Penderecki.

Under **chief conductor Vladimír Válek**, who has led it since 1985, the orchestra has reached a very high professional level. At the present time, the PRSO performs concerts within the framework of a season ticket system at the **Dvořák Hall at Prague's Rudolfinum**. It is a regular guest at several important cultural events (such as the Prague Spring, the Prague August, Smetana's Litomyšl, the Moravian Autumn, etc.).

The Prague Radio Symphony Orchestra is proud to regard itself as **one of the most important radio orchestras in Europe**. The artistic standing of the orchestra is confirmed by the positive reaction it meets on foreign tours, both from

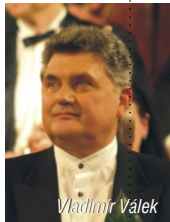


#### **Contact:**

Symfonický orchestr Českého rozhlasu (SOČR)  
Vinohradská 12  
120 99 Praha 2, Czech Republic

tel: +420 22 155 1411  
[www.rozhlas.cz/socr](http://www.rozhlas.cz/socr)

SOČR



Vladimír Válek

audiences and critics. The Prague Radio Symphony Orchestra has appeared in Germany, Italy, Austria, Spain, Turkey, Switzerland, France, Greece, England, South Korea, Japan, China, Taiwan and the United States.

What is also rich is **recording career**. It records for leading companies such as Supraphon, Radioservis, Pony Canyon, Clarton. The latest projects realised in co-operation of Czech Radio and Sup-raphon include recordings of the complete symphonies of A. Dvořák, P. I. Tchaikovsky and the piano concerts of V. J. Tomášek.

Orchestra's recordings, featuring **piano concerts by Ervín Schulhoff** with the soloist Jan Simon and conducted by Vladimír Válek, won a world music critics award in January 1996 at the MIDEM Classic in Cannes (the **Cannes Classical Award**).

Its official soloists co-operate with the orchestra: organist Aleš Bárta, violinists Ivan Ženatý, Martin Válek, violin cellist Michal Kaňka and pianist Jan Simon. The assistant chief director is Jan Kučera.

### Production Centre

Established on 1 December 2002, the Production Centre is a Czech Radio umbrella project that produces creative programmes, both talk and music, and organises two musical competitions – Concertino Praga and Concerto Bohemia. In addition to the Executive Producer and his production team, talk and music directors, sound directors, producers and the head secretary for musical competitions also work at the Production Centre.

The Production Centre takes on business from its main partners. Czech Radio 3 – Vltava and Czech Radio 2 – Prague, from the International Department, the Marketing and PR Department, the Office of the CEO and the Programming Director, as well as from other partners from within Czech Radio.

The Production Centre is a Czech Radio umbrella project that produces creative programmes, both talk and music, and organises two musical competitions – Concertino Praga and Concerto Bohemia.

### Czech Radio Big Band

The history of the Big Band goes back to the 1960s, when it was called the **Dance and Jazz Orchestra**. It was founded by and first led by the excellent Czech jazz musician and composer **Karel Krautgartner**. Over the years many personalities whose names have become part of Czech jazz history have passed through the orchestra: among them Luděk Hulan, Richard Kubernát, Václav Král, Laco Déczi, Milan Ulrich. In 2002 **Felix Slováček** was replaced as chief conductor of the Czech Radio Big Band by **Václav Kozel**.

### Disman Children's Radio Ensemble

The Disman Children's Radio Ensemble was established in **September 1935** and was led until 1973 by its founder, the renowned teacher and radio director **Miloslav Disman**. The ensemble was then taken over by Jan Berger until it came under the leadership of **Zdena and Václav Flegl**. As well as taking part in radio programmes, the ensemble has its own repertoire.

### Czech Radio Children's Choir

The Czech Radio Children's Choir was led from 1945 by **Dr. Bohumil Kulínský**, under whom the choir reached a high level in terms of both programme and interpretation. The choir was next led by Čestmír Stašek, and then in 1992 **Dr. Blanka Kulínská** and her son **Bohumil Kulínský** became choir master and artistic director. The two have led the choir to very high standards of interpretation. The children take part in many studio recordings, live broadcasts and public concerts. The choir also represents Czech choral singing and Czech Radio abroad.



The Czech Radio Big Band was formed in the 1960s, the Disman Children's Radio Ensemble was established in 1935 and the history of the Czech Radio Children's Choir dates back to 1945.



### Prix Bohemia Radio

The Prix Bohemia Radio is a **festival of original radio creativity** and was first held in Mladá Boleslav in **1976**. The categories rotate every year, though it always features an international category. The festival is chaired by Czech Radio's director of programming and takes place in Poděbrady at the end of September / the beginning of October.

### Concertino Praga

The Concertino Praga is a member of the European Union of Music Competitions for Youth (EMCY). An **international competition for young musicians**, it was founded in **1966** by the children and young people music department.

Czech Radio sends recordings (15 - 20 min.) to the **EBU**, and in some cases to the **EMCY**. The winners – CP laureates – defend their titles at a winners' concert in Prague and within the framework of the South Bohemian CP festival.

### Concerto Bohemia

Czech Radio's competition for young orchestras and ensembles takes place in Prague every year and is a younger sibling to the Concertina Praga. It too was begun by the children and young people music department. Both competitions are based on the same principle: the anonymous appraisal of sound recordings. The upper age limit is 25 and the maximum number of players is 36.

The first annual Prix Bohemia Radio took place in 1976. The Concertino Praga competition was established in 1966 by the children and young people music department, while its younger sibling, the Concerto Bohemia, started several years later.

### Technology and Information Technology at Czech Radio

Understandably, Czech Radio has to use a great amount of modern technical equipment in the creation and broadcasting of its programmes. Czech Radio's technical division takes care of obtaining, maintaining and using that technology in the best possible way. That technology includes recording and broadcasting studios, connecting systems and communication between individual departments, a telephone exchange and a modern information infrastructure including a WAN network, radio relaying equipment (such as transmission vans) and broadcasting distribution systems.

From the point of view of transmitting individual radio programmes, the most important service is **broadcasting centres**. They are equipped with modern digital technology and use recordings made on CD, MD, DAT and direct from computers. Classic analogue tape is rarely used today (that is especially true of news programmes, which practically never use them). Studios are equipped with the **Dalet computer system**, which is used for recording, preparing programmes, special transmissions and to a certain extent for archiving programmes. Czech Radio's **most modern** facility is the **Studio Building in Římská Street**, in the Prague district of Vinohrady. All studios are equipped with digital mixing desks, computer systems and are connected by fibre optics. At the same time, regional studios are also being equipped with similar technology.

**Recording studios** are an important part of Czech Radio's facilities, and are used for recording various genres of music and drama. The biggest studio, Studio 1 in Vinohrady, is designed for the recording of symphonic music, and can hold a whole orchestra. The

From the point of view of transmitting individual radio programmes, the most important service is broadcasting centres, which are equipped with digital technology and use recordings made on CD, MD, DAT and direct from computers.

recordings are not just broadcast but are also sold on various formats. The technical division also restores unique historical pictures which were taken at Czech Radio.

A **satellite system** is used to distribute the broadcasting signal of nation-wide stations: the signal is broadcast from Prague by satellite, from where it is broadcast back to the country and to individual transmitters where it is used as the transmitter's source signal. We also cooperate with partner radio stations in Europe to whom we are joined by satellite connection (e.g. in the live transmitting of concerts and sports events, or in the international exchange of programmes). A modern **broadband ISDN distribution** network is increasingly used in radio broadcasting; this allows for the very simple transfer of sound signals, without the need for ordering and organising special modulation lines.

Czech Radio uses modern **information, computer and communications technology** intensively and all its centres are equipped with an information technology and computer network. Regional studios are connected via data lines allowing for quick and reliable transmission in electronic form. The radio archive is gradually being digitalised (both sound and print archives).

A further information and communications medium is the internet. **Czech Radio's web pages** have with time become an extensive resource offering information about the station as well as broad news coverage, including the possibility to download on request old news stories for instance. Another part of the Czech Radio website is the **live broadcasting of programmes**, which is especially popular with the Czech community overseas.

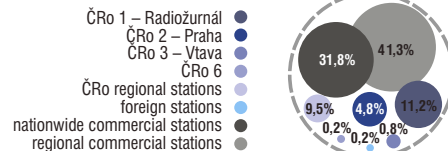
**A satellite system is used to distribute the broadcasting signal of nationwide stations: the signal is broadcast from Prague by satellite, from where it is broadcast back to the country and to individual transmitters where it is used as the transmitter's source signal.**

## Czech Radio's audience

Czech Radio, specifically some of its nation-wide and regional stations, is listened to on an average day by more than fifth of the Czech population over the age of 12. Multimedia research conducted by the company **MEDIA PROJEKT during the second half of 2005** found that Czech Radio has a **26.4% share** of the radio audience in the Czech Republic. The average listen to Czech Radio is 3,3 hours a day. Some **2.5 million listeners**, or almost a third of Czechs over the age of 12, listen to a Czech Radio station at least once a week. In a very competitive environment of commercial broadcasting, three nationwide and over 60 regional or local radio stations, **Czech Radio 1 – Radiožurnál** has for a long time been among the most successful. In the monitored period Radiožurnál was the most listened to radio station in the Czech Republic and reached over **900 thousand** listeners a day, e.g. **10,5%** of the Czech population over the age of 12. Among regional public service radio stations the most listened to are **Czech Radio České Budějovice, Czech Radio Brno** and **Czech Radio Plzeň**.

### Share of the Czech radio market according to stations

(second half of 2005)



Source: Continuous research of consumption of the print media and radio audience MEDIA PROJEKT, carried out for SKMO by the GfK Praha and Median agencies. Data from 1. 7. – 31. 12. 2005

**Czech Radio, specifically some of its nationwide and regional stations, is listened to on an average day by almost a third of the Czech population over the age of 12.**



## Co-operation with the European Broadcasting Union (EBU)

The EBU was **established in 1950 and is based in Geneva**. It is the biggest professional organisation of national broadcasting organisations in the world. It has 122 members in 80 countries, of which 74 are active and 48 are affiliated. In 1990 Czech Radio became an affiliated member and on 1.1.1993, with the merging of the EBU and OIRT, it became a full, active member. It includes EUROVISION and EURORADIO - a system of exchange of television and radio programmes organised by and coordinated by the EBU and based on the programmes offered by individual members.

**Co-operation with the EBU in terms of radio is very broad** and includes the areas of music, news, sport, educational and drama programmes, youth programmes, motoring programmes, etc. One of the EBU's main areas is **co-operation in the technical field**. The EURORADIO network - its two satellite channels - broadcasts around 2,500 concerts and opera performances every year and coordinates over 440 sporting events and 120 important news events. **EURORADIO has a potential audience of around 400 million listeners**.

The EURORADIO season offers a range of **over 100 programmes** intended for live broadcast in its concert, opera and jazz seasons, special days and the New York Metropolitan Opera in the period from September to June. Furthermore, it broadcasts over 250 concerts in the period 15. 6. – 15. 9. in EURORADIO summer festivals. The popular music project EUROSONIC offers its members over 600 concerts a year.

Czech Radio plays an important role in the area of the **international exchange of music programmes** organised through EURORADIO, allowing an important part of our national culture to be presented across a wide genre and regional spectrum. Through our international department Czech Radio regularly plays an active role in EURORADIO musical programme cycles (concert season, opera season, jazz season, special days) and offers many music programmes in a system of free programme exchanges. That mostly concerns concert recordings from important festivals, leading orchestras' concert seasons and the very best chamber ensembles and soloists.

**Co-operation with the EBU in terms of radio is very broad and includes the areas of music, news, sport, educational and drama programmes, youth programmes, motoring programmes, etc.**

## How Czech Radio is financed

Czech Radio is financed in a mixed way according to law no. 348 from 5. 8. 1994 on radio and television license fees. Around 83% of Czech Radio's total income comes from radio license fees. The remainder comes from commercial activities (selling advertising time, renting free technical capacity, publishing, selling the rights to sound recordings in the archive, etc.).

## Czech Radio's employees

On 1. 1. 2006 Czech Radio had 1,444 employees, of whom 911 work in Prague and 533 in our regional studios.

## Commercial Activities

Czech Radio is allowed by law to engage in certain commercial activities, which serve to supplement the organisation's finances to an extent of 10 – 18% of the total budget. Following an amendment to the Czech Republic's laws the importance of commercial activities is decreasing, particularly in the area of radio advertising.

## Advertising and Sponsorship

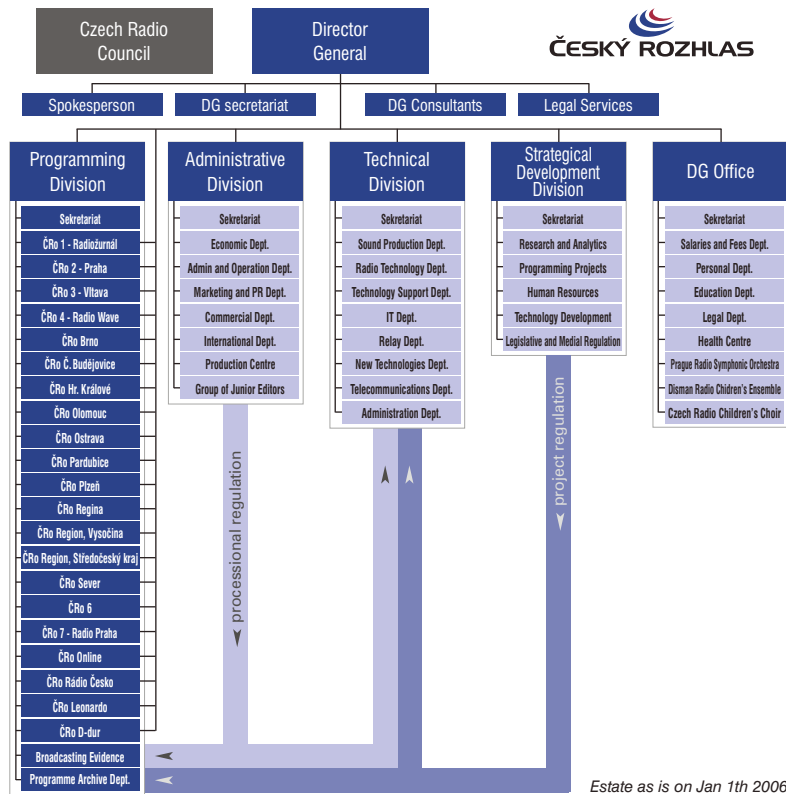
The sale of radio advertisements and sponsorship remain our most important commercial activity. The amount of advertising is limited by the amount of time advertising is allowed (a maximum of three minutes daily on nationwide stations and a maximum of five minutes a day on regional stations). With the exception of news and current affairs programmes all of Czech Radio's programmes and events can be sponsored. The agency ARBOMedia handles advertising on Czech Radio's nationwide stations, while other commercial activities are taken care of by Czech Radio's expert divisions.

**Information on conditions for the sale of advertising and sponsorship on Czech Radio, including prices, can be obtained from:**

**ARBOMedia.net Praha, spol. s r. o.**

(exclusive representative for nationwide stations for the sale of advertising in broadcasting studios)

Janáčkovo nábřeží 51, 150 00 Praha 5, Phone: +420 251 082 111, e-mail: pr@arbomedia.cz



## The Sale of Licenses

Interested parties can obtain **mechanical rights** to certain titles from Czech Radio's rich archive, including titles which are of great importance in the history of the Czech Republic. Those rights allow (with the observation of further conditions under the copyright law) for the release of those recordings on commercial formats (CD, MC, CD ROM, video, film etc.).

Contact: Český rozhlas, Vinohradská 12, 120 99 Praha 2, Tel.: +420 22 155 1346  
e-mail: [licence@rozhlas.cz](mailto:licence@rozhlas.cz)

## Rental of recording studios, outside broadcast equipment, audio support services for events

According to availability Czech Radio offers its recording studios and outside broadcast equipment for short-term rental. Prices are according to a set price-list.

Contact: Český rozhlas, Vinohradská 12, 120 99 Praha 2, Tel.: +420 22 155 1303  
e-mail: [obchod@rozhlas.cz](mailto:obchod@rozhlas.cz)

## Recording of Particular Programmes

If listeners would like to obtain a copy of a favourite programme or an excerpt from a Czech Radio broadcast, we can make recordings for private use (which may not be rebroadcast). Prices are according to a set price-list.

Contact: Český rozhlas, Vinohradská 12, 120 99 Praha 2, Tel.: +420 22 155 1341  
e-mail: [info@rozhlas.cz](mailto:info@rozhlas.cz)

Interested parties can obtain mechanical rights to certain titles from Czech Radio's rich archive, including titles which are of great importance in the history of the Czech Republic.





## History of Czech(oslovak) Radio

- 1923** 18. 5. – PRAGUE - start of regular broadcasting from a tent at Kbely (Czechoslovakia the second country after Britain to broadcast regularly in Europe)
- 1924** 1. 8. – first sports broadcast (boxing from Letná)
- 1925** 1. 9. – BRNO - start of studio broadcasting
- 1926** 12. 2. – first live opera broadcast (Národní divadlo, Prague - Smetana's "The Two Widows")
- 1927** 28. 1. – first Czech broadcasting station starts operating in Prague - Staré Strašnice
- 1928** 10. – first live broadcast of presidential address
- 1929** – Agricultural Radio begins regular broadcasting - first specialized radio broadcast in Europe
- 1930** 1. 4. – time signal introduced
- 1932** 1. 10. – Foundation of Prague Radio Symphony Orchestra
- 1935** 23. 10. – BRATISLAVA - start of studio broadcasting
- 1936** 26. 10. – first international opera broadcast (Opera Comique in Paris - "The Bartered Bride")
- 1945** 1. 7. – MORAVSKÁ OSTRAVA - start of studio broadcasting
- 1945** 8. 9. – first transoceanic broadcast from New York
- 1945** 9. 10. – first broadcast from wax cylinder recording
- 1945** 10. 12. – Ceremonial opening of the new Czechoslovak Radio building in Fochova třída (now Vinohradská 12 in Prague Vinohrady), in which the institution still has its headquarters today
- 1945** – foundation of the Dismal Children's Radio Ensemble
- 1945** 31. 8. – RADIO PRAHA begins broadcasting abroad
- 1945** 5. 5. – Prague Uprising begins with radio appeal for help
- 1945** May – second station of Czechoslovak Radio begins broadcasting - PRAHA II > Československo > Hvězda (after 1968) > Československo (after 1989) > ČRo 1 - RADIOŽURNÁL (1993)
- 1945** end of year – PLZEŇ and ČESKÉ BUDĚJOVICE - start of studio broadcasting
- 1945** – HRADEC KRÁLOVÉ and ÚSTÍ n/L - start of studio broadcasting
- 1945** – start of TV broadcasting (TV part of radio until 1957)
- 1945** – introduction of radio by wire
- 1945** – first VHF transmitter begins transmitting on Petřín in Prague
- 1953** 1. 3. – first stereo broadcast (jointly by Praha station and TV)
- 1954** – Regional station for Prague and C. Bohemia (after 91 REGINA PRAHA) begins broadcasting
- 1958** – Station for demanding listeners begins broadcasting on VHF - ČESKOSLOVENSKO II > VLTAVA (after 1968)
- 1964** – foundation of international competition for young musicians "Concertino Praga"
- 1964** – active participation of radio in the political changes in society (direct transmissions from public meetings, discussion programs...)
- 1976** 21. 8. – fighting at the radio (15 dead)
- 1976** – foundation of festival of original radio production "Prix Bohemia Radio"

1991

- Act on Radio and TV Broadcasting passed, enabling operation of private channels
- Czech National Council passes act on the establishment of Czech Radio as an independent public entity

1992

31. 3. – foundation of radio competition for young chamber orchestras "Concerto Bohemia"

1994

1. 7. – OLOMOUC - start of studio broadcasting

1. 7. – Czech Radio Record Company begins operating

1995

6. 11. – Czech Radio 6 / RADIO FREE EUROPE begins broadcasting

1997

- Act No. 135/1997 passed, amending level of radio license fees to 37 CZK and volume of advertising time on nationwide and regional channels of Czech Radio to 3 and 5 minutes per day respectively

1998

1. 5. – website www.cro.cz started

1999

11. 2. – opening Czech Radio Ústí nad Labem branch office in Liberec

1. 7. – the Czech Radio Board appointed Václav Kasík the Director General of Czech Radio

2000

18. 5. – ceremonial opening of new Studio Building at Římská street

2001

29. 10. – broadcasting in Russian (Czech Radio 7 – Radio Praha) begins

2002

31. 8. – 65. anniversary of the start of Czech Radio broadcasts abroad

4. 3. – Czech Radio Pardubice begins broadcasting

1. 5. – launch of special broadcasts for foreigners living in the Czech Republic. Broadcasting in English, German, Spanish, French and Russian by Czech Radio 7 - Radio Prague, international broadcasting becomes part of the new set up at Czech Radio 6 (formerly Czech Radio 6/Radio Free Europe).

17. 6. – Czech Radio Region begins broadcasting for the region of Vysočina

11. 9. – 30th Give Blood with Czech Radio campaign takes place

1. 10. – after the American side stops financing the Czech broadcasts of Radio Free Europe the news-current affairs station Czech Radio 6/Radio Free Europe is renamed Czech Radio 6.

1. 10. – Czech Radio Ústí nad Labem changed the name on Czech Radio Sever.

21. 10. – Czech Radio regional broadcasting for Central Bohemia under the name Czech Radio Region, Central Bohemia (the previously used name Czech Radio Regina is now exclusively used for Czech Radio broadcasting in the Prague metropolitan area)

- 80th anniversary of the launch of regular radio broadcasting in the Czech lands

2003

14. 12. – first regular broadcasting from Zlín

2004

1. 5. – in conjunction with planned transformation to digital broadcasting, Rádio Česko and D-dur stations started its operation

2005

30. 5. – Czech Radio Sever started regular broadcasting for Liberec and Jablonec region

- starts broadcasting Czech Radio Leonardo (on the Internet since September, digital since 21 October)

2006

13. 1. – 1:13 p.m. (13:13 military time) launch of Czech Radio 4 – Radio Wave



Information and all phone contacts through operator +420 22 155 1111

**Director General  
Secretary**

tel.: +420 22 155 1200  
+420 22 155 1202  
+42022 155 1203  
fax: +42022 422 2223

**Director General  
Office**

tel.: +420 22 155 1208  
+420 22 155 1209  
fax: +420 22 422 2223

**Programming  
Division Office**

tel.: +420 22 155 1207  
fax: +420 22 155 1242

**Administrative  
Division Office**

tel.: +420 22 155 1241  
fax: +420 22 272 1242

**Technical Division  
Office**

tel.: +420 22 155 3250  
fax: +420 22 155 3253

**Programme Information  
Dept.**

tel.: +420 22 155 1313  
fax: +420 22 155 1342  
[ohlasy@rozhlas.cz](mailto:ohlasy@rozhlas.cz)

**Czech Radio 1 -  
Radiožurnál**

tel.: +420 22 155 2127  
[radiozurnal@rozhlas.cz](mailto:radiozurnal@rozhlas.cz)

**Czech Radio 2 - Praha**

tel.: +420 22 155 2500  
[praha@rozhlas.cz](mailto:praha@rozhlas.cz)

**Czech Radio 3 - Vltava**

tel.: +420 22 155 2677  
[vltava@rozhlas.cz](mailto:vltava@rozhlas.cz)

**Czech Radio 6**

tel.: +420 22 155 2701  
fax: +420 22 155 2736  
[cro6@rozhlas.cz](mailto:cro6@rozhlas.cz)

**Czech Radio 7 - Radio  
Praha**

tel.: +420 22 155 2901  
fax: +420 22 155 2903  
[cr@radio.cz](mailto:cr@radio.cz)

**Czech Radio Online**

tel.: +420 22 155 2800  
fax: +420 22 155 2802  
[online@rozhlas.cz](mailto:online@rozhlas.cz)

**Czech Radio 4  
Radio Wave**

ICQ: 244238260  
[radiowave@rozhlas.cz](mailto:radiowave@rozhlas.cz)

**Czech Radio  
Rádio Česko**

tel.: +420 22 155 2195  
[cesko@rozhlas.cz](mailto:cesko@rozhlas.cz)

**Czech Radio D-dur**

[d-dur@rozhlas.cz](mailto:d-dur@rozhlas.cz)

**Czech Radio Leonardo**

tel.: +420 22 155 2832  
[leonardo@rozhlas.cz](mailto:leonardo@rozhlas.cz)

**Czech Radio Brno**

Beethovenova 4  
657 42 Brno

tel.: +420 542 523 111  
fax: +420 542 523 156  
[info@bo.rozhlas.cz](mailto:info@bo.rozhlas.cz)

**Zlín Redaction:**

Osvoboditelů 187  
760 01 Zlín  
tel.: +420 577 004 161  
fax: +420 577 004 153  
[zlin@bo.rozhlas.cz](mailto:zlin@bo.rozhlas.cz)

**Czech Radio Plzeň**

Náměstí Míru 10  
320 70 Plzeň  
tel.: +420 377 488 111  
fax: +420 377 488 110  
[info@pl.rozhlas.cz](mailto:info@pl.rozhlas.cz)

**Karlovy Vary Redaction:**

Karla Čapka 4  
360 01 Karlovy Vary  
tel.: +420 353 222 232  
fax: +420 353 222 828  
[karlovyvary@rozhlas.cz](mailto:karlovyvary@rozhlas.cz)

**Czech Radio  
České Budějovice**

U tří lvů 1  
370 29 Č. Budějovice  
tel.: +420 386 797 111  
fax: +420 386 797 230  
[zpravy@cb.rozhlas.cz](mailto:zpravy@cb.rozhlas.cz)

**Czech Radio Olomouc**

Horní náměstí 21  
771 06 Olomouc  
tel.: +420 585 100 111  
fax: +420 585 100 120  
[rozhlas@ol.rozhlas.cz](mailto:rozhlas@ol.rozhlas.cz)

**Czech Radio Regina**

Hybešova 10  
186 72 Praha 8  
tel.: +420 272 170 111  
fax: +420 222 322 326  
[regina@rozhlas.cz](mailto:regina@rozhlas.cz)

**Radioservis**

Jeseniova 36  
130 00 Praha 3  
tel.: +420 222 711 028  
fax: +420 222 712 616  
[info@radioservis-as.cz](mailto:info@radioservis-as.cz)

**Czech Radio  
Hradec Králové**

Havlíčková 292  
500 01 Hradec Králové  
tel.: +420 495 011 120  
fax: +420 495 011 444  
[rozhlas@hk.rozhlas.cz](mailto:rozhlas@hk.rozhlas.cz)

**Czech Radio Ostrava**

Dr. Šmerala 2  
702 00 Ostrava  
tel.: +420 596 203 111  
fax: +420 596 118 198  
[rzp@ov.rozhlas.cz](mailto:rzp@ov.rozhlas.cz)

**Czech Radio Region,  
Středočeský kraj**

Hybešova 10  
186 72 Praha 8  
tel.: +420 272 170 111  
fax: +420 222 322 326  
[region@rozhlas.cz](mailto:region@rozhlas.cz)

**Prague Radio  
Symphony Orchestra**

tel.: +420 22 155 1401  
fax: +420 22 155 1413  
[socr@rozhlas.cz](mailto:socr@rozhlas.cz)

**Czech Radio Region,  
Vysočina**

Masarykovo náměstí 42  
586 01 Jihlava  
tel.: +420 567 310 900  
fax: +420 567 301 600  
[proregion@rozhlas.cz](mailto:proregion@rozhlas.cz)

**Czech Radio Pardubice**

Sv. Anežky České 29  
530 02 Pardubice  
tel.: +420 466 530 070  
fax: +420 466 530 070  
[pardubice@rozhlas.cz](mailto:pardubice@rozhlas.cz)

**Czech Radio Sever**

Na Schodech 10  
400 01 Ústí nad Labem  
tel.: +420 475 211 686  
[rozhlas@sever.rozhlas.cz](mailto:rozhlas@sever.rozhlas.cz)

**Liberec Redaction:**

Lidové sady 425/1  
460 01 Liberec  
tel.: +420 485 110 895  
fax: +420 485 110 895  
[liberec@sever.rozhlas.cz](mailto:liberec@sever.rozhlas.cz)