



in brief 2010/2011

czechradio.cz
info@czechradio.cz





Czechoslovakia was the first country in continental Europe to begin regular radio broadcasts. Our first broadcast on **18 May 1923** was from a scout tent in the Prague district of Kbely.



status

stations

public service radio

Czech Radio 1 – Radiožurnál (news, current affairs station)

Czech Radio 2 – Praha (station for the whole family)

Czech Radio 3 – Vltava (station devoted to culture)

Czech Radio 6 (news, current affairs station)

Czech Radio – regional broadcasting

Czech Radio Brno – Czech Radio České Budějovice – Czech Radio Hradec Králové – Czech Radio Olomouc – Czech Radio Ostrava – Czech Radio Pardubice – Czech Radio Plzeň – Czech Radio Sever – Czech Radio Regina – Czech Radio Region, Středočeský kraj – Czech Radio Region, Vysočina

Czech Radio 7 – Radio Praha (international broadcasting)

Czech Radio D-dur (classical music)

Czech Radio Rádio Česko (news, current affairs station)

Czech Radio Leonardo (popular-educational station)

Czech Radio Radio Wave (station for the young people)

czechradio.cz

Czech Radio also supports original artistic radio work (in the form of the Prix Bohemia Radio), important artistic bodies (the Prague Radio Symphony Orchestra, the Czech Radio Big Band, the Brno Radio Orchestra of Folk Instruments, the Dismal Children's Radio Ensemble, Children's Choir) and young musicians from many areas (the Concertino Praga and Concerto Bohemia competitions). It is an active member of the European Broadcasting Union (EBU) and – via the Czech Radio Foundation – is also involved in the area of charity.

FM, MW, LW, SW, DVB-T + live broadcasting on czechradio.cz

Vinohradská 12, 120 99 Praha 2, Czech Republic

info@czechradio.cz

web pages

non-programming activities

broadcasting bands

address

e-mail

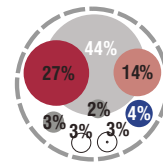
**nationwide news – current affairs station
broadcasting 24 hours a day**



radiozurnal.cz

e-mail:
radiozurnal@rozhlas.cz

- fast, reliable and thorough information service reporting on both domestic and international events
- commentators offering the widest possible range of views
- up-to-date traffic and weather reports
- interviews, discussions and meetings with interesting people
- religious broadcasting
- broadcasting for minorities
- Czech and foreign popular music



- news
- current affairs
- sport
- arts programmes
- traffic and motoring
- broadcasting for minorities
- religious broadcasting
- music

What you won't find anywhere else

- news, weather and Green Wave traffic reports in the morning **every fifteen minutes**
- morning reports – **From Close Up** and **Under Your Skin**
- interesting human stories and the most burning issues of the day
- **20 Minutes of Radiožurnál** – an interview with the main protagonist of an important current affair
- direct sports **transmissions** both from home and abroad
- the widest network of foreign correspondents
- entire broadcasts in the **Radio on Demand** sound archive on the internet



Frequencies on FM (MHz)

Brno 95,1 * České Budějovice 91,1 * Domažlice 98,0 * Hodonín 106,2 * Chomutov 98,9 * Jeseník 91,3 * Jihlava 90,7 * Karlovy Vary 102,6 Klatovy 99,8 * Liberec 95,9 * Mariánské Lázně 97,6 * Ostrava 101,4 * Pardubice 89,7 * Písek 97,0 * Plzeň-Krašov 89,1 * Plzeň-Radeč 99,2 Praha 94,6 * Příbram 102,2 * Sokolov 94,3 * Sušice 90,6 * Trutnov 88,5 * Třebíč 92,1 * Uherský Brod 93,0 * Ústí nad Labem 90,9 Valašské Meziříčí 92,5 * Votice 93,1 * Vsetín 92,1 * Zlín 99,5 * Znojmo 101,2

Frequencies on AM (kHz) – monday to friday 5:00 – 24:00, saturday and sunday 6:00 – 24,00 / Uherské Hradiště - Topolná 270
DVB-T, DVB-S and via Internet at radiozurnal.cz

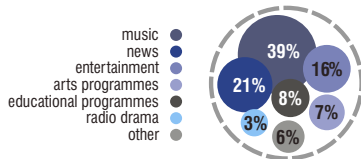
praha.rozhlas.cz

e-mail:
praha@rozhlas.cz



nationwide station for the whole family
broadcasting 24 hours a day

- a colourful mix of information, educational programmes and entertainment
- programmes for children
- news and current affairs programmes
- broadcasting about free time, interests, pastimes and hobbies
- a wide selection of music - contemporary popular music, oldies, folk, brass band music



What you won't find elsewhere

- this much entertainment
- so many programmes for children
- a fairytale every day

Frequencies on FM (MHz) Brno 92,6 * Břeclav 96,3 * Č. Budějovice 103,7 * Chomutov 94,2 * Hodonín 107,8 * Jeseník 88,7 * Jičín 106,9
Jihlava 107,1 * Klatovy 90,3 * Kutná Hora 102,2 * Liberec 89,9 * Nové Hradky 102,2 * Olomouc 107,2 * Opava 101,7 * Ostrava 101,9
Pardubice 100,1 * Písek 98,9 * Plzeň 101,7 * Praha 91,2 / 100,7 * Rýmařov 90,8 * Třebíč 102,3 * Třinec 107,8 * Slavič 107,9
Slavonice 103,3 * Šumperk 98,7 * Ústí n/L 98,6 * Val. Meziříčí 89,9 * Votice 103,2 * Vrbno p/Pr. 103,6 * Vsetín 102,9 * Zlín 107,7 * Znojmo 89,6
Frequencies on AM (kHz) České Budějovice 954 * Dobruška 954 * Karlovy Vary 954 * Praha – Liblice 639 * M. Budějovice 1332
Ostrava 639 * until 6:00 PM.

DVB-T, DVB-S and via Internet at praha.rozhlas.cz

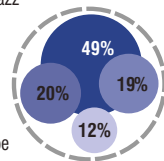
nationwide station aimed at people
interested in music, the spoken word
and culture in the widest sense of the word
broadcasting 24 hours a day



vitava.rozhlas.cz

e-mail:
vitava@rozhlas.cz

- almost 70% of broadcasting consists of classical music and jazz
- literature, drama and documentaries at prime times
- complete daily arts listings
- simple and clear programme schedule
(the same genres are featured at the same time every day)
- the broadcasting makes use also of the advanced functions
of the RDS system including codes of the PTY programme type



- classical music
- arts information
- arts news
- spoken word
(drama, prose, poetry)
- jazz and other genres of music

What you won't find elsewhere

- live broadcasts from opera houses and concert halls
around the world
- radio documentaries and radio drama
- culture information and current affairs
- jazz, ethnic and other specific genres of music
- **Klub Vltava** offers closer contact with broadcasts and
publishes an exclusive quarterly, the Magazin Klubu
Vltava, with information from the world of culture.



Frequencies on FM (MHz)

Brno - Kojál 102,0 * Brno - Město 90,4 * České Budějovice 96,1 * Hodonín 100,4 * Cheb 106,2 * Chomutov 96,3
Jeseník 98,2 * Jihlava 95,4 * Kaplice 105,9 * Karlovy Vary 105,7 * Kašperské hory 107,2 * Klatovy 88,6 * Liberec 103,9
Ostrava 104,8 * Pardubice 102,7 * Písek 105,2 * Plzeň - Krašov 95,6 * Plzeň - Radeč 93,3 * Praha 105,0 * Píbram 107,0
Trutnov 101,9 * Ústí nad Labem 104,5 * Valašské Meziříčí 96,8 * Varnsdorf 88,4 * Vsetín 98,3 * Zlín 94,8 * Znojmo 99,2

DVB-T, DVB-S and via Internet at vitava.rozhlas.cz



sestka.rozhlas.cz

e-mail:
cro6@rozhlas.cz



**nationwide news – current affairs station
broadcasting from 18.00 to 24.00 on AM**

- live broadcasting on the Internet and transcriptions of selected programmes and reports
- offers objective news, analysis and discussion of domestic and regional issues
- programmes with a religious theme
- Radio on Demand – a unique Internet online service for listening to broadcast programmes



We promise you

- extensive domestic and foreign news
- current affairs analysis and comments
- information from all areas of science and culture
- environment, education and healthcare
- civic society

Frequencies on AM (kHz)

České Budějovice 954 * Dobruchov 954 * Karlovy Vary 954 * Moravské Budějovice 1332 * Ostrava 639
Praha-Liblice 639
DVB-T, DVB-S and via Internet at sestka.rozhlas.cz



radio.cz

e-mail:
cr@radio.cz



ČESKÝ ROZHLAS 7

**the International Service of Czech Radio
24 hours a day of news in six languages**

- current affairs (news, interviews, reports) from the Czech Republic
- focused on listeners outside of the Czech Republic and compatriots
- available on shortwave, on the Internet – radio.cz (MP3, RealAudio) via satellite, podcasting from 2006
- English broadcast available in Prague on 92.6 FM, Monday – Thursday, from 7.05 to 7.20 pm



Frequencies on SW

16 m * 25 m * 31 m * 41 m * 49 m

For detailed information on broadcasting times and frequencies see radio.cz.

ČRo 7 – Radio Praha can be received via the CS Link satellite system and also in German and English on Eutelsat Hotbird 5

DVB-S and via Internet at radio.cz



rozhlas.cz

e-mail:
see contacts
page 32-33

Czech Radio – Regional broadcasting

Broadcasting from: Brno, České Budějovice, Hradec Králové, Jihlava, Karlovy Vary, Liberec, Olomouc, Ostrava, Pardubice, Plzeň, Praha, Ústí nad Labem, Zlín

- over the 2000 – 2002 period, independent programming for the Central Bohemia, Vysočina and Pardubice regions were introduced; “local windows” were gradually expanded to the Karlovy Vary and Zlín regions, from 2005 also to the Liberec region
- Czech Radio’s long-term goal is to have a regional broadcasting structure in place in which each region would have its own radio station
- The Centre for Regional Production creates the conditions and space for the best regional station programmes to be shared and for collaboration over select programme

series, particularly involving the spoken word and music production. The programming and editing at the Centre improve the variety and quality of the programme range on offer and bring together the creative potential of the regions for more challenging projects.

We promise you

- regional news, current affairs and music
- arts, documentary programmes and smart entertainment
- regional made high-quality creative programmes

Frequencies on FM (MHz) / Brno - 106,5 - 89,5 - 93,1 - 93,6 - 97,5 - 97,3 - 99,1 - 107,3 * České Budějovice - 88,2 - 106,4 Hradec Králové - 90,5 - 95,3 - 96,5 * Olomouc - 106,8 - 92,8 - 88,7 - 101,6 * Ostrava - 107,3 - 99,0 - 105,3 - 102,6 - 95,5 Pardubice - 104,7 - 101,0 - 102,4 - 98,6 * Plzeň - 106,7 - 91,0 - 95,8 - 102,4 - 105,3 - 103,4 - 100,8 - 96,7 - 106,3 - 98,2 Sever - 88,8 - 91,3 - 98,5 - 102,3 - 103,1 - 97,4 - 107,9 * Regina - 92,6 * Region, Středočeský kraj - 100,5 - 100,3 100,0 - 100,4 - 99,0 - 87,6 - 88,4 * Region, Vysočina - 87,9 - 90,1 DVB-T and via Internet at rozhlas.cz

news and current affairs radio station
broadcasting daily 8am – 11am and 1pm – 4pm



radiocesko.cz

e-mail:
cesko@rozhlas.cz

- reliable and comprehensive information on events both domestic and international
- interviews with politicians, economists and other experts
- reports, analyses and commentaries
- politics, business, culture and sport

What you won't find elsewhere

- news reports every 15 minutes
- detailed financial information every hour
- a stream of important information with no music
- analytical interviews giving you the background on important domestic and international events



On BBC frequencies (FM - MHz): Zlín 93,9 * Olomouc 105,6 * Brno 101,3 * Liberec 99,2 Ostrava 106,3 * Plzeň 98,6 * Ústí nad Labem 105,8 * České Budějovice 89,8 Pardubice/Hradec Králové 99,1 * Praha 101,1 * Jihlava 96,7 * Karlovy Vary 94,7 DVB-T, DVB-S and via Internet at radiocesko.cz

d-dur.rozhlas.cz

e-mail:
d-dur@rozhlas.cz

classical music from the Renaissance to the 21st century works
24 hours a day – a station not only for those "seriously interested in serious music", as well as for those who just need classical music as a pleasant accompaniment to their work or leisure

- musical works with a brief commentary
- the very best recordings from the vast Czech Radio archives are included in the schedule
- there is a live broadcast or recording of a concert every working day from 8 pm and opera every Sunday from 4 pm
- schedule prepared by experienced Czech Radio 3 – Vltava programme planners
- broadcasting music via cable networks
- Music for free download

What you won't find elsewhere

- web services – discussions on classical music
- Recordings, encyclopedic information on composers



Digital broadcasting:

ČRo D-dur broadcasting is available on DVB-T, DVB-S and via Internet at d-dur.rozhlas.cz

station popularizing science, technology, nature, history and medicine



leonardo.rozhlas.cz

e-mail:
leonardo@rozhlas.cz

- extensive web offerings:
- live broadcasts, sound archives, podcasts, articles, multimedia
- hour-long special-subject magazines, interviews and discussions
- the best from the broadcasts of other Czech Radio stations (Meteor, Rambles through the Czech Past, Planetarium, Techno...)

What you won't find anywhere else

- **Enter!** – interviews with leading scientists and upcoming talent (workdays at 11.00 a.m. and 8 p.m.)
- **Third Dimension** – discussions on current topics (workdays at 2 p.m. and 10 p.m.)
- magazines: from Monday to Saturday focused on technology, medicine, variety from world cultures, nature, history and astronomy (workdays at 9 a.m.)
- **Monitor** – streaming novelties and points of interest (workdays at 10 a.m.)
- **Nota Bene** – programme focusing on ethnic music, rock and jazz



Digital broadcasting:

ČRo Leonardo broadcasting is available on DVB-T, DVB-S and via Internet at leonardo.rozhlas.cz

wave.cz

e-mail:
radiowave@rozhlas.cz

station for the young people

- we are addressing young listeners seeking new trends not only in music
- our daily playlist consists mainly of alternative rock scene, nu-folk, electro, extravagant pop or hip-hop, besides our genre programmes present various other styles
- we concentrate not only on music, theatre, film and sport, but also on domestic as well as foreign news and current affairs
- we accompany you at music festivals and interesting cultural and sport events



What you won't find anywhere else

- **Exclusive concert recordings.** Thanks to our collaboration with EBU and the Eurosonic Partnership we have a unique opportunity to offer very recent concert recordings from all of Europe
- **Radio Wave Live Sessions** – chamber concerts by the foremost Czech alternative groups, broadcast live. The Czech Radio Karlín Studio has seen performances by Sunshine, the Nihilists, Priesnitz, Khoiba, Climatizado, 100°C, Landmine Spring and the Prostitutes

Digital broadcasting:

ČRo Radio Wave broadcasting is available on DVB-T, DVB-S and via Internet at wave.cz

Czech Radio web pages



rozhlas.cz

e-mail:
online@rozhlas.cz

- online news coverage at zpravky.rozhlas.cz
- news and current affairs from the Czech Republic as well as the whole world
- multimedia content including video spots and live transmissions
- culture information
- tips for intriguing radio programmes
- webcam shots from the Czech Radio Leonardo studio
- encyclopaedia content (strongholds and castles, etc)



Selected Pages

- Digital – everyday news about digital broadcasting
- Children's pages – games and learning for children of all ages
- Nature – where else can you find an audio atlas of animals?
- World – reports and photos from around the world

What you won't find elsewhere

- audio archive and recordings of selected programmes
- content suited to different times and moods

Relax with Czech Radio's web pages

ROZHLAS.CZ

Audio World



Live broadcasts

Czech Radio nationwide and regional station broadcasting on the Internet.

Radio on Demand

A unique online service for listening to broadcast programmes

– allows you to download and listen to specific programmes or to compile your own “station” from selected programmes – your very own request radio

News reports

Recordings of Czech Radio 1 – Radiožurnál news reports from over the last 24 hours in MP3 format

Internet specials

Special-subject Internet radio

– Folk radio, Radium, Radiocustica and more...

Podcast

- New technology on the Czech Radio website. Our latest programmes are always available.

Czech Radio's communication with the public

Czech Radio does not use only the airwaves to communicate with the public. We also **co-operate with other media** (such as Czech Television and various daily newspapers), use **public relations** and support different charity projects in the form of media partnership, as well as other publicity activities.

The emphasis is placed on **promoting Czech Radio** as an institution which provides the broadest possible service in the field of radio broadcasting. In recent years great stress has been put on the brand Czech Radio and strengthening and making more precise the position of individual stations on the market. The **unified visual style** of Czech Radio and its stations is important in this regard.

Czech Radio supports many exceptional **charity, educational, cultural and sports institutions** and their activities (in the form of media co-operation). Among our long-term partners are the National Museum, the State Opera, the Administration of Prague Castle, the Czech Paralympic Committee and important festivals such as the Prague Spring, the Radio Autumn and others.

Another important part of Czech Radio's activities involves **organising our own events**, such as the regular **Open door Day**, Give Blood with Czech Radio, the Prix Bohemia Radio festival, charity toy collections, etc. Every year the **Czech Radio Yearbook** is published in a Czech-English version; it contains a summary of our programmes and economic results for the previous year. Current information on Czech Radio's stations and their programmes is available on various types of brochures and other printed material.



ROZHLAS.CZ

For Czech Radio the **direct contact with listeners** is important. Written and telephone feedback and requests for programmes to be repeated reach us via email address ohlasy@rozhlas.cz and the special listeners' number +420 22 155 1313.



Archive and Program Fund (APF)

APF Department provides for general care of funds and collections of audio, written, and video materials. The current length of the funds and collections exceeds **12,000 meters**. The length of sound funds exceeds **9,000,000 minutes**, written funds count over **50,000,000 pages**, and the number of books is greater than 50,000.

The funds and collections consist of audio recordings of various types of both historic and current media, music, photographs, personal inheritances, administrative materials, technical documentation, clippings, books, and prints. These are significant from the perspective of historic and cultural usage for program purposes, promotion, and possibly also for commercial purposes. They constitute a valuable source for both radio and general history.

They comprise many unique documents, the most valuable of which are the voices of our presidents, Emperor Franz Joseph, and significant cultural personalities: the Čapek brothers, J. Hora, K. Biebl, scientists F. Křížik, B. Hrozný, J. Pekař, J. Heyrovský, and others. They also capture significant historical moments, such as Munich 1938, May 1945, the political trials of 1950s, August 1968, etc. The fund's written documents consist of real jewels, such as the manuscripts of K. Čapek, B. Martinů, L. Janáček, and J. Suk.



Archive materials can be accessed by the public under set conditions – for more see the **Business Activities / Sale of Licenses** section.

Radioservis, a.s.

Radioservis, a. s. is the Czech Radio publishing house. It publishes the **Týdeník Rozhlas** weekly cultural magazine, which is full of interesting reading and competitions, the only magazine with the complete schedule of all Czech Radio stations plus a television supplement. **Radioservis**, a. s. is also a music publisher that brings out CDs with spoken word and music content of all genres, as well as a **book publisher** that primarily brings out publications with radio subjects or radio authors.



Czech Radio Retail Store
Vinohradská 12, Prague 2, Mon-Fri: 9.00-18.00, phone: +420 22 155 1349 (1350).

The Radioservis mail-order store: e-shop@rozhlas.cz, phone: +420 222 096 310.
radioservis-as.cz, tydenikrozhlas.cz





Nadační fond
Českého rozhlasu

The Czech Radio Foundation

Světluška

(„Lightning fly“: a symbol that brings „light into darkness“)

The best recognized long-term project of the Czech Radio Foundation is a nation-wide money collection entitled Světluška. Money raised in this annual fundraising event, accompanied by blindness awareness campaign, are carefully distributed to the blind and partially sighted people in a public granting procedure supervised by the Counsel of Experts. Patron of the project is well-known Czech singer Aneta Langerová.

Světluška supports: early intervention care for families with children with multiply disabilities (vision and movement stimulation), personal assistance for blind children integrated to normal schools, purchase of auxiliary aids such as digital reading device with voice output, Braille display, guide dogs, mobility and orientation training (using white cane), vocational skills, sheltered living and supported workplace, daily living skills, recording books on tapes etc. The bank account (ten nines) **99999 99999/0100** is open to donors throughout the whole year.

The Czech Radio Foundation was established at the instigation of the director of Czech Radio, Václav Kasík. In the ten years of existence the foundation granted over 70 million Czech crowns, especially to blind children and partially sighted people who are in desperate or extremely demanding situation.



“Every one sometimes needs light in the darkness.”

Collection account no.: **99999 99999/0100**
DMS SVETLUSKA – send to no. 87777 (contribution 30 CZK)

Prague Radio Symphony Orchestra (SOČR)

The Prague Radio Symphony Orchestra was **established in 1926** and its history dates back to the virtually beginning of Czech Radio's broadcasts. During its existence the orchestra has built up a very high reputation, thanks to its rich programme and ever-improving artistic standards. It has become an essential part of the Czech concert scene and a welcome guest at concert halls abroad.

The SOČR has been led by **many important conductors** over the years, including C. Munch, F. Konwitschny, H. Scherchen, G. Rozhdyestvensky, S. Baudo, L. Segerstam, C. Mackerras and V. Neumann. Among composers whose work the orchestra has premiered are A. Honegger, A. Khachaturjan and K. Penderecki.

Under **chief conductor Vladimír Válek**, who has led it since 1985, the orchestra has reached a very high professional level. At the present time, the SOČR performs its regular concert season at the **Dvořák Hall at Prague's Rudolfinum**. It is a regular guest at several important cultural events (such as the Prague Spring, the Radio Autumn, Smetana's Litomyšl, the Moravian Autumn, etc.).

The Prague Radio Symphony Orchestra is proud to regard itself as **one of the most important radio orchestras in Europe**. The artistic standing of the orchestra is confirmed by the positive reaction it meets on foreign tours, both from



SOČR

Contact:

Prague Radio Symphony Orchestra (SOČR)
Vinohradská 12
120 99 Praha 2, Czech Republic

tel: +420 22 155 1411
socr.rozhlas.cz



Vladimír Válek

audiences and critics. The Prague Radio Symphony Orchestra has appeared in Germany, Italy, Austria, Spain, Turkey, Switzerland, France, Greece, England, South Korea, Japan, China, Taiwan and the United States.

What is also rich is the **recording career**. It records for leading companies such as Supraphon, Radioservis, Pony Canyon, Clarton. The latest projects carried out in cooperation with Czech Radio and Supraphon include recordings of the complete symphonies of A. Dvořák, P. I. Tchaikovsky and the piano concerts of V. J. Tomášek.

The statutory soloists cooperate with the orchestra as well: organist Aleš Bárta, violinists Ivan Ženatý, Martin Válek, cellist Michal Kaňka and pianist Jan Simon. The assistant of the chief conductor is Jan Kučera.

BROLN **The Brno Radio Orchestra of Folk Instruments (BROLN)** was established in February 1952 with the task of providing interpretations of folk songs and instrumental music to a professional standard. Its make-up is based on that of traditional folk bands, with a basis of strings, dulcimers and clarinets, to which are added such characteristic folk instruments as bagpipes, pipes and mouth harp. After a hiatus of several years the orchestra was revived in April 2006 under František Černý.

Czech Radio Production Centre This was created on 1 December 2002 as an all-station Czech Radio project, responsible for the production of artistic programmes – both spoken word and musical – as well as the Junior Creative Group, and since 2007 the Prix Bohemia Radio international radio production festival.

In collaboration with Communications and External Relations the Production Centre organizes regular live hearings for secondary school students within the framework of the Radio Plays project, as well as arranging regular pre-premiere hearings of recently recorded radio plays for the professional public and organises two musical competitions – Concertino Praga and Concerto Bohemia.

The Production Centre is the place of origin of much of the content by which Czech Radio fulfils and sometimes goes beyond its mission of an electronic public service broadcaster.

Czech Radio Big Band

The history of the Big Band goes back to the 1960s, when it was called the **Dance and Jazz Orchestra**. It was founded and first led by the excellent Czech jazz musician and composer **Karel Krautgartner**. Over the years many personalities whose names have become part of Czech jazz history have passed through the orchestra: among them Luděk Hulan, Richard Kubernát, Václav Král, Laco Déczi, Milan Ulrich. In 2002 **Felix Slováček** was replaced as chief conductor of the Czech Radio Big Band by **Václav Kozel**.

Disman Children's Radio Ensemble

The Disman Children's Radio Ensemble was established in **September 1935** and was led until 1973 by its founder, the renowned teacher and radio director **Miloslav Disman**. The ensemble was then taken over by Jan Berger until it came under the leadership of **Zdena and Václav Flegl**. As well as taking part in radio programmes, the ensemble has its own repertoire.

Czech Radio Children's Choir

The choir was established in 1945 and first conducted by **Bohumil Kulínský**, followed by Čestmír Stašek. Since 1992 the choir has been led by **Blanka Kulínská**. The children perform at many radio events in the studios, direct transmissions and public concerts. The choir has achieved a high artistic standard and the children often represent Czech choral art on Czech Radio and abroad.



The Czech Radio Big Band was formed in the 1960s, the Disman Children's Radio Ensemble was established in 1935 and the history of the Czech Radio Children's Choir dates back to 1945.



Prix Bohemia Radio

The Prix Bohemia Radio is a **festival of original radio creativity** and was first held in Mladá Boleslav in **1976**. The categories rotate every year, though it always features an international category. The festival is chaired by Czech Radio's Chief Producer and takes place in Poděbrady at the end of September / the beginning of October.



Concertino Praga

This international radio competition for young musicians is arranged under the patronage of the European Broadcasting Union (EBU) and is a member of the European Union of Music Competitions for Youth (EMCY). It was established in 1966. Recordings of candidates are sent to Czech Radio by organizations affiliated to EBU or members of EMCY. The winners – CP laureates – defend their title at the Winners Concert in Prague and at the South Bohemian CP Festival.



Concerto Bohemia

Czech Radio's competition for young orchestras and ensembles takes place in Prague every year and is a younger sibling to the Concertino Praga. It was also established by the Children and young people music department. Both competitions are based on the same principle: the anonymous appraisal of sound recordings. The upper age limit is 25 and the maximum number of players is 36.

The first annual Prix Bohemia Radio took place in 1976. The Concertino Praga competition was established in 1966 by the Children and young people music department, while its younger sibling, the Concerto Bohemia, started several years later.

Technology and Information Technology at Czech Radio

For the production and transmission of radio programmes, Czech Radio naturally uses a large amount of modern equipment. The Czech Radio Technical Division ensures the acquisition, management and optimum usage of such equipment, including in particular information and communications technology (central applications administration, LAN/WAN networks, contribution and distribution systems) and radio technology (equipment at all radio studios and equipment for external broadcasts and recordings).

All internal operations at Czech Radio are fully digitized and like any other modern company, Czech Radio takes great advantage of the recent extremely dynamic developments in computer science. The production and broadcasting (release) of all our programmes is performed within our central computer systems for text processing (news reports), audio (classic radio broadcasting) and multimedia (web presentations and similar activities). Current radio broadcasting is increasingly put out direct for our listeners and that cannot be done without the essential connections to internal systems, so we ensure that "remote" editors always have direct access to internal resources, and then again that it is possible to rapidly process the contributions which they supply and include them in broadcasting. Technical developments allow us to offer programming staff an increasing capacity to modify radio broadcasting (wireless and wired communications, multi-channel sound processing, supplementation of broadcasting with other information – e.g. synchronization of sound broadcasting and additional information published on the Internet, RDS-TMC traffic information system data transfer for navigation devices in vehicles and the like).

From the point of view of transmitting individual radio programmes, the most important service is broadcasting centres, which are equipped with digital technology and use recordings saved on CD, MD, DAT and directly in computers.

Our stations' own broadcasting is delivered both by using classic analogue systems on long, medium and very short wavebands (LW, MW and VSW) and by digital systems – currently by broadcasting on what is known as a public service multiplex using – DVB-T. Programme distribution by means of individual terrestrial transmitters makes use of satellite connections and because programmes are not coded in any way this can be used for individual reception (with DVB-S). All our stations may be streamed on the internet as a matter of course, and it is also possible to create your own radio channel from a number of programmes using an application that we call “Radio on Demand”.

Another great challenge is the digitization of our radio archives, comprising both audio and text material. This process is taking place not only in Prague, but also at individual regional stations.

The Technical Division also takes care of the technical side of collaboration with our radio partners in the European Broadcasting Union (EBU) – this international exchange of programmes nowadays works on what is practically quite an automatic basis and the complete range is on offer – again via the computer network – to all staff members involved.

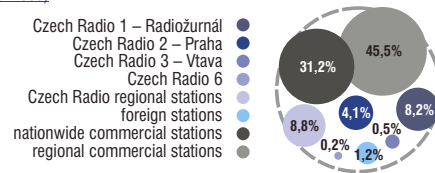
A satellite system is used for distributing the broadcasting signal of nationwide stations: the signal is broadcast from Prague by satellite, from where it is broadcast back to the country and to individual transmitters where it is used as the transmitter's source signal.

Czech Radio and listeners in the polls

Czech Radio, or one of its four nationwide, eleven regional and four special stations, is listened to on an average day by one **fifth of the population** of the Czech Republic aged 12 – 79. According to the results of **RADIO PROJEKT** radio station audience research of the third and fourth quarters of 2009, Czech Radio had a **22.1% share** in the radio market of the Czech Republic. The listening period for Czech Radio as a whole averages **3.9 hours per day**. At least once a week one of the Czech Radio stations is tuned in by approximately **2.6 million listeners**, i.e. one third of the population of the Czech Republic aged 12 – 79. In the strongly competitive environment of private broadcasting with three nationwide and over 60 regional and local radio stations, within the framework of Czech Radio the most successful over the long term is **Czech Radio 1 – Radiožurnál**. This station is selected daily by **742,000 listeners**, i.e. 8.4% of the population of the Czech Republic aged 12 – 79. Among its target regions, the **Brno, České Budějovice** and **Pizeň** regional stations lead the competition.

Czech Radio market share according to stations

(third and fourth quarters of 2009)



Information source: ongoing radio station audience research at RADIO PROJEKT, which has been performed for SKMO since 1 January 2006 by MEDIAN and STEM/MARK.

At least once a week one of the Czech Radio stations is tuned in by some 2.6 million listeners, i.e. one fifth of the population of the Czech Republic aged 12-79.



Cooperation within the European Broadcasting Union (EBU)

Czech Radio has been substantially involved in international activities since 1993, when after three years of associate membership it became a full active member of the European Broadcasting Union (EBU). The International Relations Department of Czech Radio ensures close and regular contact between Czech Radio and both the EBU headquarters and its individual members.

EBU is the largest professional association of national broadcasting organizations in the world, with 120 members in 80 countries, out of which are 75 active members and 43 associate. EBU comprises of EUROVISION and EURORADIO – a television and radio programme exchange system, organized and coordinated by EBU, based on the programme range offered by its members. EBU represents its members in the European Union with regard to audiovisual matters, and collaborates with other important European institutions, UNESCO and other world broadcasting unions. Every week EBU addresses 650 million viewers and listeners.

Radio collaboration with EBU is many-sided, including music, news reporting, sport, educational and drama programmes, youth programmes, broadcasting for motorists, marketing, training, research, etc... Thanks to its membership in EBU, Czech Radio takes an active share in technical developments, e.g. digital broadcasting and new media. It also deals with legal issues – not only with regard to European legislation – and is involved in the promotion and support of public service.

One of the most highly developed activities at EBU is collaboration within the EURORADIO satellite network, which in the last year has had over 3,400 concerts and opera performances on offer. During the period from September to June the EURORADIO season offers more than 100 direct transmissions from concert, opera and jazz seasons, from special days and from the Metropolitan Opera in New York. The EUROSONIC RADIO+ popular music project offers members over 600 concerts each year. Czech Radio presents a considerable amount of national culture in a broad range of genres and regional variations, its selection of music on offer ranking it among the most active EBU organizations. Broadcasts from international sport events and important political and economic events are also coordinated by EBU.

By making the use of the EURORADIO programme offer, Czech Radio provides its listeners with live transmissions or concert recordings and opera performances of outstanding quality from the whole world.

How Czech Radio is financed

Czech Radio is financed in a mixed way according to Act no. 348 from 5 August 2005 on radio and television license fees. Around 90% of Czech Radio's total income comes from radio license fees. The remainder comes from commercial activities (selling advertising time, renting free technical capacity, publishing, selling the rights to sound recordings in the archive, etc.).

Czech Radio's employees

On 1 January 2010 Czech Radio had 1,484 employees, of whom 1011 work in Prague and the rest in our regional studios. There are 680 women out of the total number of employees.

Commercial Activities

Czech Radio is allowed by law to engage in certain commercial activities, which serve to supplement the organisation's finances.

Advertising and Sponsorship

The sale of radio advertisements and sponsorship remain our most important commercial activity. The amount of advertising time is limited by law (a maximum of three minutes daily on nationwide stations and a maximum of five minutes a day on regional stations). With the exception of news and current affairs programmes all of the Czech Radio's programmes and events can be sponsored. The agency Media Master, s. r. o. handles advertising on Czech Radio's nationwide stations, while other commercial activities are taken care of by Czech Radio's expert divisions.

Information on conditions for the sale of advertising and sponsorship on Czech Radio, including prices, can be obtained from:

Media Master, s. r. o.

(exclusive representative for nationwide stations, nonexclusive representative for regional studios)
Lazarská 1719/5, 110 00 Praha 1, Phone: +420 251 082 111, www.media-master.cz

The Sale of Licenses

Interested parties can obtain **mechanical rights** to certain titles from the Czech Radio's rich archive, including titles which are of great importance in the history of the Czech Republic. Those rights allow (with the observation of further conditions under the copyright law) for the release of those recordings on commercial formats (CD, MC, CD ROM, video, film etc.).

Contact: Český rozhlas, Vinohradská 12, 120 99 Praha 2, Phone: + 420 22 155 1346
e-mail: licence@rozhlas.cz

Production of radio advertising spots

For their advertising campaigns broadcasted by Czech Radio, clients have the possibility to have their professional advertising spot created according to given screenplay or outlined concept.

Contact: Český rozhlas, Vinohradská 12, 120 99 Praha 2, Phone: + 420 22 155 1344
e-mail: reklama@rozhlas.cz

Rental of recording studios,

outside broadcast equipment, audio support services for events

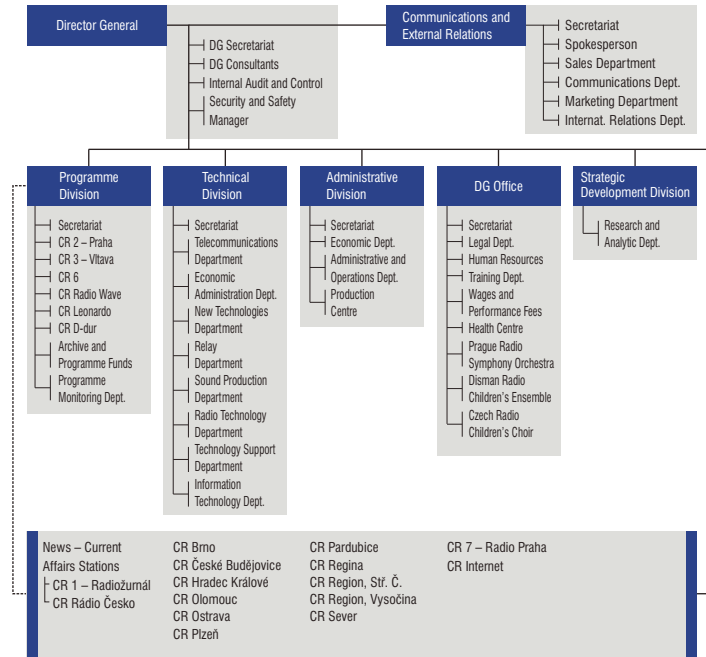
According to availability Czech Radio offers its recording studios and outside broadcast equipment for short-term rental. Prices are according to a set price-list.

Contact: Český rozhlas, Vinohradská 12, 120 99 Praha 2, Tel.: + 420 22 155 1303
e-mail: obchod@rozhlas.cz

Recording of Particular Programmes

If listeners would like to obtain a copy of a favourite programme or an excerpt from a Czech Radio broadcast, we can make recordings for private use (which may not be used for public purposes). Prices are according to a set price-list.

Contact: Český rozhlas, Vinohradská 12, 120 99 Praha 2, Tel.: + 420 22 155 1325
e-mail: info@rozhlas.cz



1923

18. 5. – PRAGUE – start of regular broadcasting from a tent at Kbely (Czechoslovakia is only the second country, after Britain, to broadcast regularly in Europe)

1924

1. 8. – first sports broadcast (boxing from Letná)
1. 9. – BRNO – the start of studio broadcasting from the city

1925

12. 2. – first live opera broadcast (National Theatre, Prague – Smetana's "The Two Widows")

1926

28. 1. – first Czech broadcasting station starts operating in Prague – Staré Strašnice

1927

28. 10. – first live broadcast of a presidential address

3. 1. – Agricultural Radio begins regular broadcasting - first specialized radio broadcast in Europe
1. 4. – the time signal is introduced

1928

1. 10. – Foundation of Prague Radio Symphony Orchestra

1929

23. 10. – BRATISLAVA – the start of studio broadcasting from the city

1930

26. 10. – the first international opera broadcast (Opera Comique in Paris – "The Bartered Bride")

1. 7. – MORAVSKÁ OSTRAVA – the start of studio broadcasting from the city

8. 9. – the first transoceanic broadcast, from New York

9. 10. – the first broadcast from wax cylinder recording

1932

10. 12. – ceremonial opening of the new Czechoslovak Radio building in Fochova třída (now Vinohradská 12 in Prague's Vinohrady), which is still the institution's headquarters

1935

15. 9. – foundation of the Dismal Children's Radio Ensemble

1936

31. 8. – RADIO PRAHA begins broadcasting abroad

1945

5. 5. – Prague Uprising begins with radio appeals for help

end of year – PLZEŇ and ČESKÉ BUDĚJOVICE – the start of studio broadcasting from the cities

– HRADEC KRÁLOVÉ and ÚSTÍ n/L – the start of studio broadcasting from the cities

– the start of TV broadcasting (TV was part of Czechoslovak Radio until 1957)

– the introduction of radio by wire

– the first VHF transmitter begins transmitting on Petřín hill in Prague

1964

1. 3. – the first stereo broadcast (jointly by Praha Radio and TV)

– the regional station for Prague and C. Bohemia (after 91 REGINA PRAHA) begins broadcasting

dec. – the launch of the Československo II station broadcasting (at FM - after 1968 VLTAVA)

– the foundation of an international competition for young musicians called "Concertino Praga"

1966

21. 8. – the occupation of the Czech Radio buildings, fights in front of the Czech Radio Prague building (15 casualties)

1968

– the foundation of "Prix Bohemia Radio", a festival of original radio production

– a new law is passed on Radio and TV Broadcasting, enabling operation of private channels

– The Czech National Council announces the establishment of Czech Radio as an independent public entity

1976

1991

1992

1. 1. – Czech Radio established as the public service institution

31. 3. – the foundation of "Concerto Bohemia", a radio competition for young chamber orchestras

3. 1. – OLOMOUC - the start of studio broadcasting from the city

1. 7. – Czech Radio Record Company begins operating

6. 11. – Czech Radio 6 / RADIO FREE EUROPE begins broadcasting

– Act No. 135/1997 is passed, increasing the radio license fees to 37 CZK and changing the amount of advertising per day on nationwide and regional channels of Czech Radio, to 3 and 5 minutes resp.

31. 3. – the foundation stone laying ceremony of the Studio House at Římská street in Prague

1. 5. – foundation of the website www.cro.cz

11. 2. – Czech Radio opens the Ústí nad Labem branch office in Liberec

1. 7. – Václav Kasík is appointed the Director General of Czech Radio by the Czech Radio Board

18. 5. – the ceremonial opening of new Studio Building at Římská street

29. 10. – Czech Radio 7 – Radio Praha begins also broadcasting in Russian

4. 3. – Czech Radio Pardubice begins broadcasting

17. 6. – Czech Radio Region begins broadcasting for the region of Vysočina

1. 10. – Czech broadcasts of Radio Free Europe the news-current affairs station Czech Radio 6/Radio Free Europe is renamed Czech Radio 6 after the withdrawal of American backing

1. 10. – Czech Radio Ústí nad Labem is renamed Czech Radio Sever.

21. 10. – Czech Radio regional broadcasting for Central Bohemia goes under the new name Czech Radio Region, Central Bohemia (the previously name, Czech Radio Regina, is now exclusively used for Czech Radio broadcasting in the Prague metropolitan area)

14. 12. – the start of regular broadcasting from Zlín

1. 5. – in conjunction with the planned transition to digital broadcasting, Rádio Česko and D-dur stations begin operating

30. 5. – Czech Radio Sever starts regular broadcasting for Liberec and Jablonec region
– broadcasting of Czech Radio Leonardo begins (on the Internet since Sept., digital since 21 Oct.)

1. 10. – act nr. 348/2005 Coll. comes into force, adjusting the amount of the licence fee to 45 Czech crowns per month

13. 1. – 1:13 p.m. (13:13 military time) sees the launch of Czech Radio 4 – Radio Wave

9. 2. – the launch of the České Radiokomunikace digital multiplex A broadcasting

1. 10. – Czech Radio 1, Czech Radio 2, Czech Radio 3, Czech Radio Wave, Czech Radio Rádio Česko, Czech Radio D-dur and Czech Radio Leonardo start broadcasting on Multiplex 1.

15. 7. – the opening ceremony of the reconstructed administrative part of the Czech Radio historical building at Vinohradská Street 12

2004

2005

2006

2008

2009



International Relations Department:tel.: +420 22 155 1252, intrel@rozhlas.cz**Director General
Secretary**tel.: +420 22 155 1200
+420 22 155 1202
+42022 155 1203
fax: +42022 422 2223**Director General
Office**tel.: +420 22 155 1208
+420 22 155 1209
fax: +420 22 422 2223**Programming
Division Office**tel.: +420 22 155 1207
fax: +420 22 155 1242**Administrative
Division Office**tel.: +420 22 155 1241
fax: +420 22 272 1242**Technical Division
Office**tel.: +420 22 155 3250
fax: +420 22 155 3253**Programme Information
Dept.**tel.: +420 22 155 1313
fax: +420 22 155 1342
ohlasy@rozhlas.cz**Czech Radio 1 -
Radiožurnál**

tel.: +420 22 155 2127

radiozurnal@rozhlas.cz**Czech Radio 2 - Praha**

tel.: +420 22 155 2500

paha@rozhlas.cz**Czech Radio 3 - Vltava**

tel.: +420 22 155 2677

vltava@rozhlas.cz**Czech Radio 6**tel.: +420 22 155 2701
fax: +420 22 155 2736cro6@rozhlas.cz**Czech Radio 7 - Radio
Praha**tel.: +420 22 155 2901
fax: +420 22 155 2903
cr@radio.cz**Czech Radio Internet**tel.: +420 22 155 2800
fax: +420 22 155 2802online@rozhlas.cz**Czech Radio
Radio Wave**

tel.: +420 22 155 2333

radiowave@rozhlas.cz**Czech Radio
Rádio Česko**

tel.: +420 22 155 2195

cesko@rozhlas.cz**Czech Radio D-dur**d-dur@rozhlas.cz**Czech Radio Leonardo**

tel.: +420 22 155 2832

leonardo@rozhlas.cz**Information** and all phone contacts through operator **+420 22 155 1111****Czech Radio Brno**Beethovenova 4
657 42 Brnotel.: +420 542 523 111
fax: +420 542 523 156
info@bo.rozhlas.cz**Zlín Studio:**Osvoboditelů 187
760 01 Zlín
tel.: +420 577 004 159
fax: +420 577 004 153zlin@bo.rozhlas.cz**Czech Radio
České Budějovice**U tří lvů 1
370 29 Č. Budějovice
tel.: +420 386 797 111
fax: +420 386 797 230
zpravy@cb.rozhlas.cz**Czech Radio Olomouc**Horní náměstí 21
771 06 Olomouc
tel.: +420 585 100 111
fax: +420 585 100 120
rozhlas@ol.rozhlas.cz**Czech Radio Regina**Hybešova 10
186 72 Praha 8
tel.: +420 22 155 3913
fax: +420 22 232 2326
regina@rozhlas.cz**Karlovy Vary Studio:**Zitkova 1150/3
360 01 Karlovy Vary
tel.: +420 353 222 232
fax: +420 353 222 232
karlovyvary@rozhlas.cz**Radioservis**Olšanská 3
130 00 Praha 3
tel.: +420 222 711 028
fax: +420 222 712 616
info@radioservis-as.cz**Czech Radio
Hradec Králové**Havlíčková 292
500 01 Hradec Králové
tel.: +420 495 011 120
fax: +420 495 011 444
rozhlas@hk.rozhlas.cz**Czech Radio Ostrava**Dr. Šmerala 2
702 00 Ostrava
tel.: +420 596 203 111
fax: +420 596 120 679
rzp@ov.rozhlas.cz**Czech Radio Region,
Středočeský kraj**Hybešova 10
186 72 Praha 8
tel.: +420 22 155 3900
fax: +420 22 155 3770
region@rozhlas.cz**Prague Radio
Symphony Orchestra**tel.: +420 22 155 1401
fax: +420 22 155 1413
socr@rozhlas.cz**Czech Radio Region,
Vysočina**Masarykovo náměstí 42
586 01 Jihlava
tel.: +420 567 310 900
fax: +420 567 301 600
proregion@rozhlas.cz**Czech Radio Pardubice**Sv. Anežky České 29
530 02 Pardubice
tel.: +420 466 530 070
fax: +420 466 530 070
pardubice@rozhlas.cz**Czech Radio Sever**Na Schodech 10
400 01 Ústí nad Labem
tel.: +420 475 211 686
fax: +420 475 214 288
rozhlas@sever.rozhlas.cz**Liberec Studio:**Modrá 1048
460 06 Liberec
tel.: +420 221 553 703
fax: +420 221 553 601
redakce.liberec@rozhlas.cz